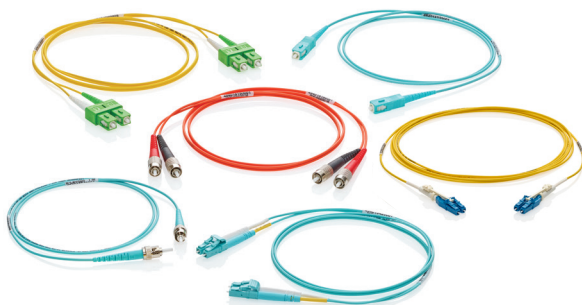


Premium Plus Fiber Patch Cords

APPLICATION

Premium Plus Fiber Optic Patch Cords are designed to interconnect, or cross connect fiber networks within structured cabling systems including data centers, Broadband CATV, Passive Optical Network (PON), WDM or DWDM multiplexing, FTTH and voice services in ATM and SONET metropolitan and access networks. Quick-turn service is available with orders of up to 100 patch cords and ships within three business days. Contact customer service for details.



SPECIFICATION

Multimode and single-mode patch cords shall be manufactured in the U.S.A. The patch cords shall be compliant with ANSI/TIA-568.3-D. Insertion loss shall be a maximum of 0.25 dB for multimode and single-mode. Multimode return loss shall be greater than 26 dB and greater than 50 dB for single mode connectors. Single-mode angled physical contact connectors (APC) shall have a minimum of 60 dB return loss. Patch cords shall have a pull force of at least 50 N (11.24 lbf) per IEC 61300-2-4. Connector durability of greater than 500 matings for both multimode and single mode. Patch cords shall be individually packaged with part numbers, descriptions, optical performance, code 39 barcode part number printed on each package and QR code to access supporting documentation. Patch cords shall include wrap labels including length, end designation and serial number providing traceability to factory collected test data. Fiber patch cords with LC unibody connectors shall use Spectro-Link™ Technology to support field polarity reversal without twisting or moving fibers. Unibody LC connectors shall have a push/pull grip that, coupled with a one-piece unitized duplex housing, shall assure exact centerline spacing for fast mating in congested patching fields.

FEATURES

- Available in simplex, duplex, and pigtail configurations
- LC, LC Unibody, LC/APC, SC, SC/APC, ST, FC and FC/APC connector options
- Quick-turn service for fast delivery
- TIA compliant color-coded connectors and boots
- Cable jacket and boots color-coded for easy ID of fiber
- Fiber options: OS2, OM1, OM3, and OM4
- 100% tested for insertion loss and single-mode for return loss
- LC Unibody connector with Spectro-Link Technology includes reversible polarity feature, allowing polarity changes in the field without tools
- Unibody design is ideal for high-density applications, and comes standard with 2.0 mm duplex round cables
- Premium Plus Series cords include a Limited Lifetime Warranty when used with other Leviton cabling and installed by a Leviton certified contractor
- Other jacket colors available as custom with MOQ and lead time applicable
- Custom configurations via [Leviton.com/configurator](https://leviton.com/configurator)

DESIGN CONSIDERATIONS

- All connectors have precision pre-radiused or pre-angled zirconia ferrules for consistent end face geometry
- Single-mode UPC and APC polish
- FC and ST connectors have metal bodies
- Duplex clips included with duplex configurations
- Bend-insensitive glass (OS2, OM3 and OM4)

STANDARDS & REGULATIONS

- ANSI/TIA-568.3-D Optical Fiber Cabling and Components Standard
- ANSI/TIA-455-171-B FOTP-171 Attenuation by Substitution Measurement for Short Length Multimode Graded Index and Single-Mode Optical Fiber Cable Assemblies
- IEC 61300-3-34: Attenuation of Random Mated Connectors
- IEC 61300-3-6: Return Loss of Random Mated Connectors
- ANSI/TIA-598-D Optical Fiber Cable Color Coding
- ISO/IEC 11801-1, -2, -3, -5 Information technology — Generic cabling for customer premises
- TIA/EIA-604-10 (LC: FOCIS 10), TIA/EIA-604-3 (SC: FOCIS 3), TIA/EIA-604-2, (ST: FOCIS 2), TIA/EIA-604-4 (FC: FOCIS 4)
- Endface Geometry per IEC61755-3-1 (PC ferrules) and IEC61755-3-2 APC ferrules
- Plenum: National Fire Protection Association standard NFPA 90A
- LSZH rating: IEC 60332-1-2, IEC 60332-3-24, IEC 332-3C
- RoHS

PRODUCT SPECIFICATIONS

Premium Plus Fiber Patch Cords



MECHANICAL SPECIFICATIONS

Connector Durability: >500 Matings
 Connector Cable Retention: 50 N (11.24 lbf)

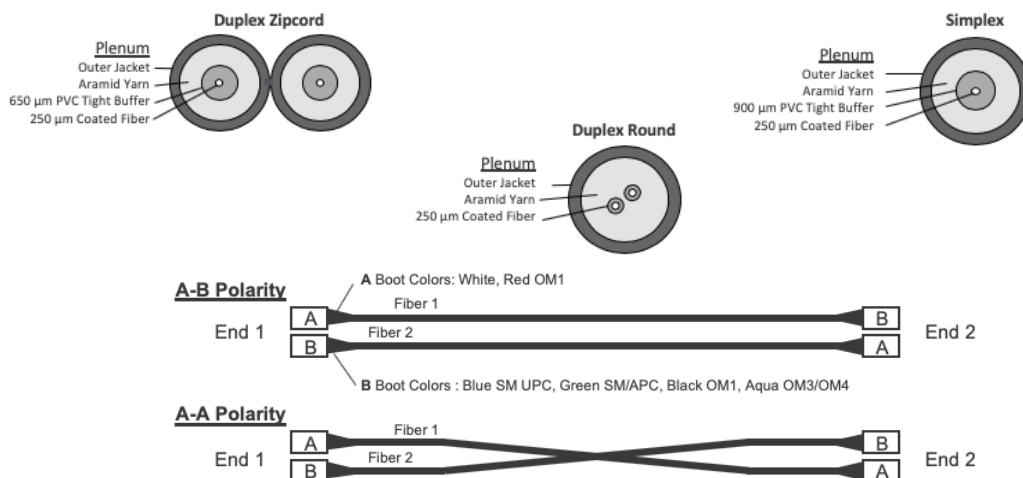
COUNTRY OF ORIGIN

USA

WARRANTY INFORMATION

For Leviton product warranties, go to leviton.com/warranty

| Physical Specifications | | | | | | | | | |
|-------------------------|-------------|-------------------------|-------------------|--------------|-----------|--------------|-----------|-------------------------|---------------|
| Cable Type | Fiber Count | Nominal Diameter | Weight | Tension | | Bend Radius | | Temperature Range | |
| | | Inches (mm) | Plenum | LBS (N) | | Inches (cm) | | | |
| | | | LBS/100FT (kg/km) | Installation | Long Term | Installation | Long Term | Operating/ Installation | Storage |
| 1.6 mm Duplex Zipcord | 2 | 0.06 x 0.12 (1.6 x 3.2) | 7 (6) | 11 (50) | 7 (30) | 2.0 (5.0) | 1.2 (3.0) | -20°C to +70°C | -40°C to 75°C |
| 2.0 mm Duplex Round | 2 | 0.08 (2.0) | 5 (7) | 11 (50) | 7 (30) | 1.2 (3.0) | 0.8 (2.0) | | |
| 2.0 mm Simplex | 1 | 0.08 (2.0) | 3 (5) | 11 (50) | 7 (30) | 2.0 (5.0) | 1.2 (3.0) | | |



Note on Patch Cord:

Length tolerance: < 10-meter (33 ft) patch cords: +7.6 cm/-0, +3 in/-0in
 > 10-meter (33 ft) patch cords: +2.0% / -0%

Length is measured from ferrule tip to ferrule tip with protective caps removed

OPTICAL SPECIFICATIONS

Insertion Loss

Multimode: 0.15 dB typical, 0.25 dB max
 Single mode: 0.12 dB typical, 0.25 dB max

Return Loss

Multimode: ≥ 26 dB
 Single mode: ≥ 50 dB UPC, ≥ 60 dB APC

OPTICAL SPECIFICATIONS – LC UNIBODY CONNECTOR

Insertion Loss

Multimode: 0.15 dB max
 Single mode: 0.25 dB max

Return Loss

Multimode: ≥ 35 dB
 Single mode: ≥ 55 dB UPC

PRODUCT SPECIFICATIONS

Premium Plus Fiber Patch Cords



Premium Plus Fiber Patch Cords

PERFORMANCE SPECIFICATIONS

Fiber Performance

| Fiber Type | Maximum Attenuation (dB/km) | | | | Bandwidth (MHz'km) | | Transmission Distance (meters) | | | | |
|----------------------------------|-----------------------------|---------|---------|---------|--------------------|---------|--------------------------------|-------------------------|-----------------------|--------------|--------------|
| | 850 nm | 1300 nm | 1310 nm | 1550 nm | 850 nm | 1300 nm | 100 Mb | 1 GbE | 10 GbE | 40 GbE | 100 GbE |
| 8.2/125 µm Single-mode (OS2) | N/A | N/A | 0.4 | 0.3 | N/A | N/A | >5,000 @ 1310 nm | | >10,000 @ 1310 nm | N/A | N/A |
| 62.5/125 µm MM (OM1) | 3.5 | 1.0 | N/A | N/A | 200 | 500 | 300/300 @ 850/1300 nm | 300/600 @ 850/1300 nm | 36/300 @ 850/1300 nm | N/A | N/A |
| 50/125 µm LO (10G-300m) MM (OM3) | 3.0 | 1.0 | N/A | N/A | 2,000* | 500** | | 1,000/600 @ 850/1300 nm | 300/300 @ 850/1300 nm | 100 @ 850 nm | 100 @ 850 nm |
| 50/125 µm LO (10G-550m) MM (OM4) | 3.0 | 1.0 | N/A | N/A | 4,700* | 500** | | 1,040/600 @ 850/1300 nm | 550/300 @ 850/1300 nm | 150 @ 850 nm | 150 @ 850 nm |

* The effective modal bandwidth is determined based on an overfill launch (OFL) per ANSI/TIA-455-204, except on laser-optimized fiber types.

** 10GbE transmission @ 1,300 nm only applies to 10GBASE-LX4 (CWDM).

| OPTICAL FIBER | TYPE/COMPLIANCE | COMPLIANCE |
|-----------------|-----------------|--|
| OS2 Single Mode | SMF-28 Ultra | ITU-T Recommendation G.652.D, G.657.A1 compliant |
| OM1 Multimode | InfiniCor 300 | Laser-optimized 62.5 µm multimode fiber |
| OM3 Multimode | ClearCurve OM3 | TIA/EIA 492AAA-B, ITU G651.1 Compliant |
| OM4 Multimode | ClearCurve OM4 | TIA/EIA 492AAAD, ITU G651.1 Compliant |

| Make-to-order! | | | | PREMIUM PLUS FIBER PATCH CORDS | | | | |
|--------------------------|--|----------------------------|---|--|--|----------------------------|--------------|-------------------------------------|
| Assembly Type | Fiber Type | Cable Rating | Cable Type | Termination | | Unit of Measure | Length | Polarity |
| • Fiber Patch Cord (PCF) | • 8.2/125µm SM OS2 Yellow (S2) | • PLENUM (P) • LSZH (L) | • SIMPLEX 2.0 MM (S2) • DUPLEX ZIPCORD 1.6 MM (DI) • DUPLEX ROUND 2.0 MM (R2) | FIRST END | SECOND END | • Meters (M) • Feet (F) | • 0010-3000* | • Standard A-B (A-B) • A-A (A-A) |
| | • 62.5/125 µm MM OM1 Orange (MI) • 50/125 µm LO 10G-300m MM OM3 Aqua (M3) • 50/125 µm LO 10G-550m MM OM4 Aqua (M4) | | | • ST (A) • SC (Q) • LC (R) • SC/APC (E) • LC/APC (F) • LC Unibody (V) • FC (D) • FC/APC (G) | • ST (A) • SC (Q) • LC (R) • SC/APC (E) • LC/APC (F) • LC Unibody (V) • FC (D) • FC/APC (G) • No Connector (X) | | | |

For assistance customizing your trunk cables, please visit leviton.com/configurator or call Tech Support at 800.824.3005.

*E.g. 0010=001.0 Units

0015 = 001.5 Units

0150 = 015.0 Units

Notes on length:

Min FEET increment: 1-FT,

Lengths > 1-FT: User can select 0.6-Inch increments

Min METER increment: 0.2-M

Lengths > 0.2 M User can select 0.2 M increments

After 49-FT/15 M longer lead times may apply for fractional lengths



For further support information, visit leviton.com/ns/support

NETWORK SOLUTIONS GLOBAL HEADQUARTERS

Bothell, WA, USA | leviton.com/ns

(800) 824 3005 / +1 (425) 486 2222 | appeng@leviton.com

NETWORK SOLUTIONS EUROPEAN HEADQUARTERS

Glenrothes, UK | leviton.com/ns/emea

+44 (0) 1592 772124 | customerserviceeu@leviton.com

Leviton is dedicated to designing, developing and manufacturing sustainable high-performance structured cabling and speciality cabling solutions. Network Solutions products are available worldwide in over 100 countries. Visit us online to learn more.