

NetKey™ Inserts, Frames and Adapters



NKHS2AW-X



NKHS2SAW-X



CBUKAWY



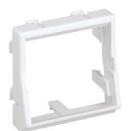
CBUKAW-2GY



CBAGAW



FCFPAW



CBFAW



NKBTAL1WH-X



NKFTA1WH-X



NKFTA1SAW-X



NK6CSSAW-X



NK6CSAW-X

Part Number	Description	Colour
-------------	-------------	--------

Inserts

NKHS2AW-X	1/2 size, sloped modular insert. Accepts two NetKey™ Modules.	Arctic White
NKHS2SAW-X	1/2 size, sloped, shuttered modular insert. Accepts two NetKey™ Modules.	Arctic White

Frames

CBUKAWY	86mm x 86mm, single gang faceplate frame with label. Accepts one 1/2 size module insert.	Arctic White
CBUKAW-2GY	86mm x 146mm, double gang faceplate frame with labels. Accepts two 1/2 size module inserts.	Arctic White
CBAGAW	50mm x 50mm, single gang faceplate frame with labels. Accepts one 1/2 size module insert.	Arctic White
FCFPAW	80mm x 80mm, faceplate frame accepts all 50mm x 50mm adapters.	Arctic White

Adapters

CBFAW	45mm x 45mm adapter, accepts one 1/2 size module insert.	Arctic White
NKBTAL1WH-X	Adapter with label pocket accepts one NetKey™ module, for Bticino Light series faceplates.	White
NKFTA1WH-X	Adapter accepts one NetKey™ module, for Bticino Living International series faceplates.	White
NKFTA1SAW-X	22.5mm x 45mm 1-Position Shuttered Adapter with label accepts one NetKey™ module.	Off White
NK6CSSAW-X	Sloped, shuttered module snaps into standard UK LJU6C floor box mounting plates, faceplates and patch panels and accepts one NetKey™ Module.	Off White
NK6CSAW-X	Single gang, 25.4mm x 32mm, shuttered adapter. Compatible with LJU6C frame. Accepts one NetKey™ Module.	Arctic White

*For standard colours other than White, replace WH in part number with BL (Black) or IW (Off White).

NetKey™ Modular Furniture Faceplate



Part Number	Description	Colour
NK4MFIW	Snap-on modular furniture faceplate. Compatible with modular furniture panel cutout dimensions 34mm to 35.56mm – 67mm to 69mm. Accepts up to four NetKey™ Modules.	Off White
NK4MFABL	Snap-on 4-port sloped modular furniture faceplate. Compatible with modular furniture panel cutout dimensions 34mm to 35.56mm – 67mm to 69mm. Accepts up to four NetKey™ Modules.	Black

For standard colours other than Off White, replace IW in part number with AW (Arctic White), BL (Black), EI (Electric Ivory), WH (White) or IG (International Grey).