

To cover unused ports
XJY-NE-209

Single Port
XJY-8081100

Single Port
XJY-8081210

Dual Ports
XJY-8081209

- Optional Modules: Keystone/HDMI/USB
- Size:22.5*45/45*45
- Material:ABS/PC
- Colour:White or Black

Single Port
XJY-NE-87

Single Port
XJY-NE-34

Single Port
XJY-NE-78

Dual Ports
XJY-NE-210

Lable paper

- Optional Modules:Keystone/USB
- Size:22.5*45/45*45
- Material:ABS
- Colour:White or Black

Cable outlet mask

- Size:45*45
- Material:ABS
- Colour:White or Black

XJY-8081106

To cover unused ports

- Size:45*45
- Material:ABS
- Colour:White or Black

XJY-8075164

Faceplate With USB

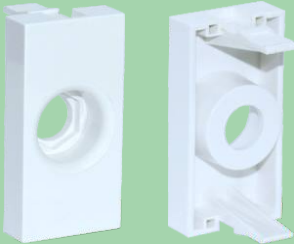
- Size:45*45
- Material:ABS
- Colour:White or Black

XJY-8081162

Faceplate With VGA

- Size:45*45
- Material:ABS
- Colour:White or Black

XJY-8081163



XJY-8081098

- Optional Modules:F81
- Size:22.5*45mm
- F81 length: 20.5 mm
- Material:ABS
- Colour:White or Black

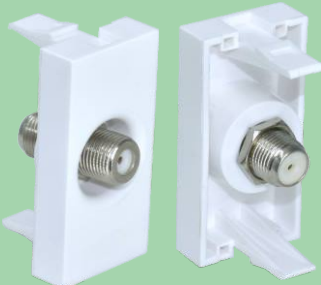
Single Port



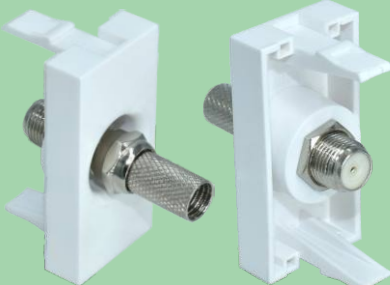
F81



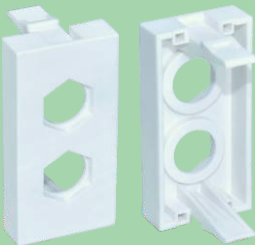
F81-01



XJY-8081098 + F81



XJY-8081098 + F81-01



XJY-8081099

- Optional Modules:F81/RCA/Banana
- Size:22.5*45
- F81 length: 20.5 mm
- Material:ABS
- Colour:White or Black

Dual Ports



Banana(F-F)



RCA



RCA-F



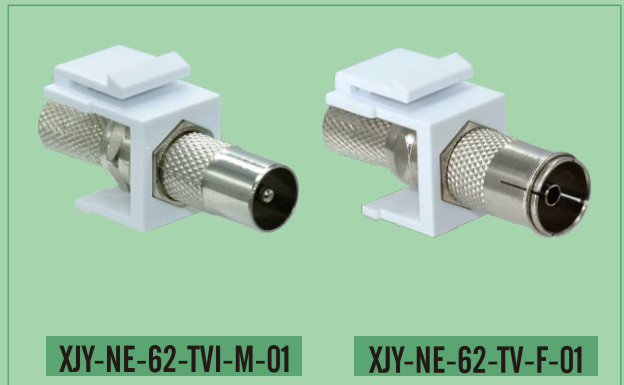
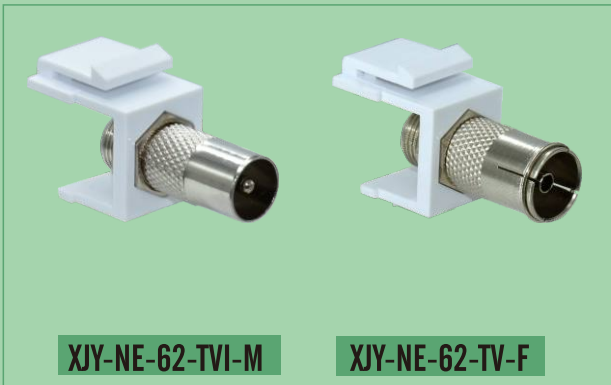
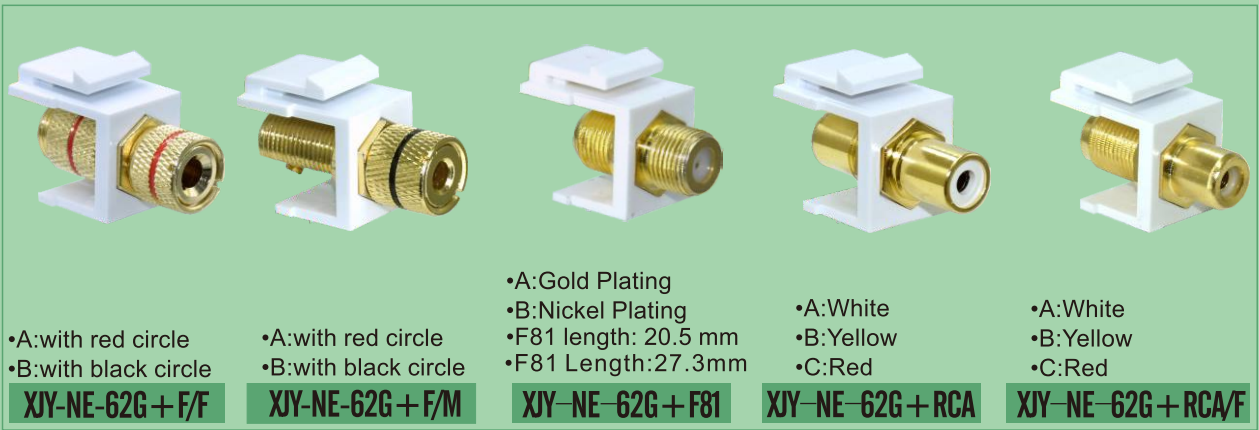
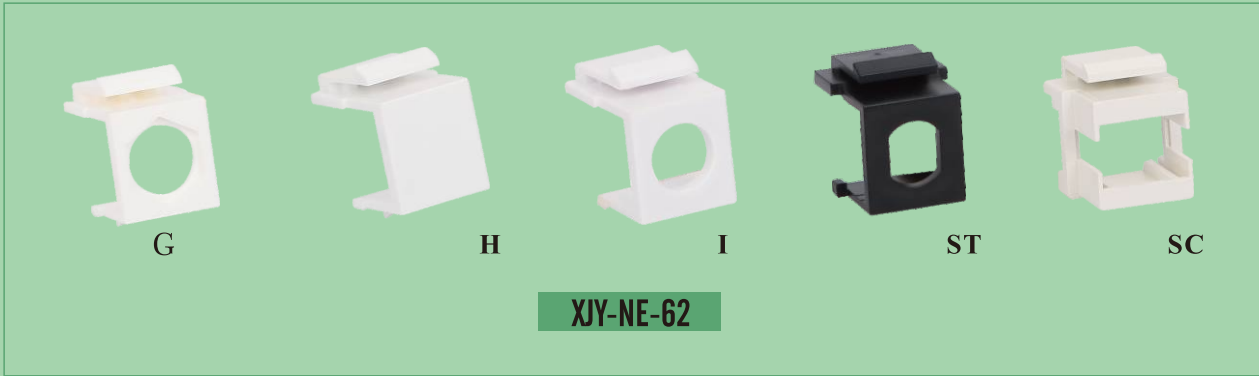
XJY-8081099 + 2Banana(F-F)

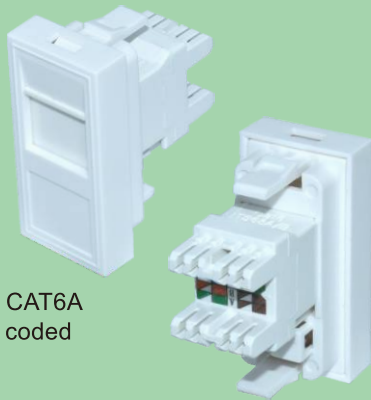


XJY-8081099 + 2RCA



XJY-8081099 + 2RCA-F





- CAT5E • CAT6 • CAT6A
- TIA/EIA : 568A/B coded
- Dual IDC
- Unshielded
- Material : PC
- Colour : White or Black
- Optional Modules: Keystone/HDMI/USB

XJY-NE-87 + NE-77A



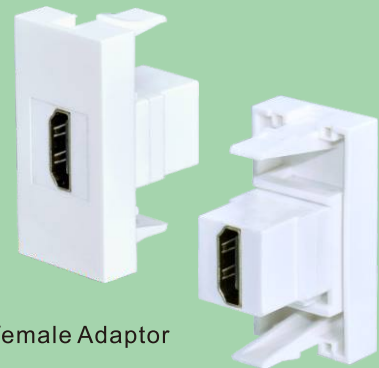
- USB2.0A/USB2.0A
- 180°
- Material:ABS/PC
- Size:22.5x45
- Colour:White or Black

XJY-8081100 + USB-08



- USB3.0A/USB3.0A
- 180°
- Material:ABS/PC
- Size:22.5x45
- Colour:White or Black

XJY-8081100 + USB-08D



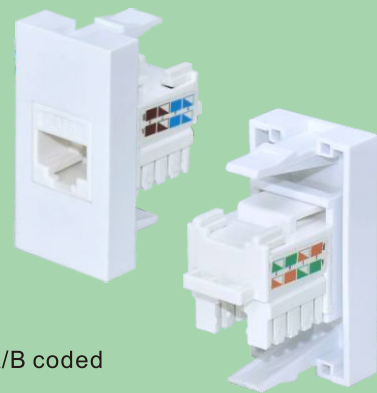
- HDMI Female-female Adaptor
- 180°
- Material:ABS
- Size:22.5x45
- Colour:White or Black

XJY-8081100 + HDMI-20



- CAT5E
- TIA/EIA:568A/B coded
- 110IDC
- Unshielded
- Material:ABS
- Size:22.5x45
- Colour:White or Black
- With binding wire hole

XJY-8081100 + NE-108



- CAT6
- TIA/EIA:568A/B coded
- 110IDC
- Unshielded
- Material:ABS
- Size:22.5x45
- Colour:White or Black
- With binding wire hole

XJY-8081100 + NE-108



F/F
Plug Type

XJY-8081101

- A:Gold Plating
- B:Nickel Plating
- Size:22.5*45
- VGA 15P
- Material: ABS
- Colour: White or Black



M/F
Plug Type

XJY-DMT-VGA-M/F

- A:Gold Plating
- B:Nickel Plating
- Size:22.5*45
- VGA 15P
- Material: ABS
- Colour: White or Black

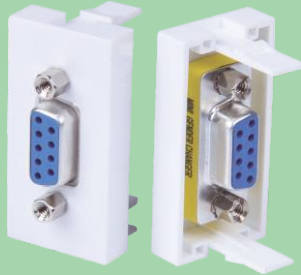


M/F
Solder Type

XJY-DMT-VGA/F

- A:Gold Plating
- B:Nickel Plating
- Size:22.5*45
- VGA 15P
- Material: ABS
- Colour: White or Black

- Size:22.5*45
- Material: ABS
- Colour: White or Black



DB 9P Plug Type

XJY-DMT-DB9-F/F

- Size:22.5*45
- Material: ABS
- Colour: White or Black



DB 9P Solder Type

XJY-DMT-DB9/F

- Size : 22. 5*45
- Material : ABS
- Colour: White or Black



Male Solder Type

XJY-DMT-TVI-M

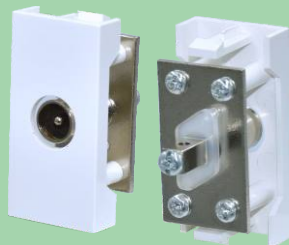
- Size : 22. 5*45
- Material : ABS
- Colour: White or Black



Female Solder Type

XJY-DMT-TV-F

- Size:22.5*45
- Material: ABS
- Colour: White or Black



Male

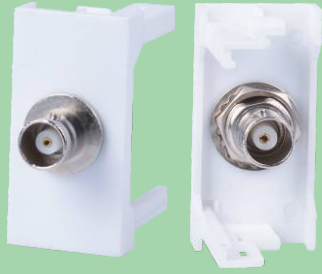
XJY-DMT-TVI-C-M

- Size:22.5*45
- Material: ABS
- Colour: White or Black



Female

XJY-DMT-TV-C-F



- Size:22.5*45
- Material: ABS
- Colour: White or Black

BNC Plug Type

XJY-DMT-BNC-F/F



- Size:22.5*45
- Material: ABS
- Colour: White or Black

Audio Plug Type

XJY-DMT-3.5 Audio



MIC Female cannon

- Size:22.5*45
- Material: ABS
- Colour: White or Black

XJY-DMT-MIC-F

RCA Audio

Pin Out:
 2G-R/GND } Right Audio
 2-Red }



Single Port

XJY-DMT-RCA-1

RCA Stereo Audio

Pin Out:
 1G-W/GND } Left Audio
 1-White }
 3G-R/GND } Right Audio
 3-Red }



Dual Ports

XJY-DMT-RCA-2

- A:RCA Gold Plating
- B:RCA Nickel Plating
- Size:22.5*45
- Screw to RCA
- Material: ABS
- Colour: White or Black

RCA Composite Video & Stereo Audio

Pin Out:
 1G-Y/GND } Composite Video
 1-Yellow }
 2G-W/GND } Left Audio
 2-White }
 3G-R/GND } Right Audio
 3-Red }

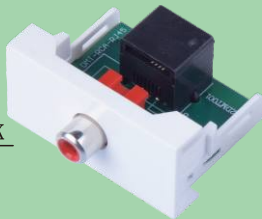


Three Ports

XJY-DMT-RCA-3

PIN OUT
 RCA (Audio) RJ45 JACK

Right Audio } 2G-R/GND — 3
 } 2-Red — 4

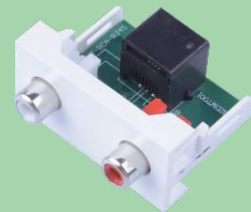


Single Port

XJY-DMT-1RCA-RJ45

PIN OUT
 RCA (Stereo Audio) RJ45 JACK

Left Audio } 1G-W/GND — 1
 } 1-White — 2
 Right Audio } 3G-R/GND — 5
 } 3-Red — 6



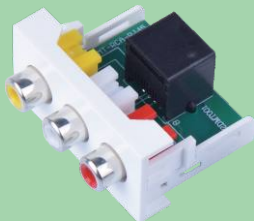
Dual Ports

XJY-DMT-2RCA-RJ45

- A:RCA Gold Plating
- B:RCA Nickel Plating
- Size: 22.5*45
- RJ45 to RCA
- Material: ABS
- Colour: White or Black

PIN OUT
 RCA (Video & Audio) RJ45 JACK

Composite Video } 1G-Y/GND — 1
 } 1-Yellow — 2
 Left Audio } 2G-W/GND — 3
 } 2-White — 4
 Right Audio } 3G-R/GND — 5
 } 3-Red — 6



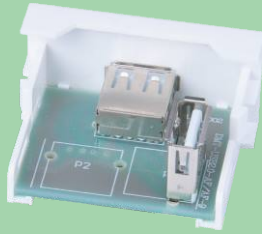
Three Ports

XJY-DMT-3RCA-RJ45

PIN OUT
USB2.0A Type USB2.0A Type

1	—	V _{BUS}	—	1
2	—	D ⁻	—	2
3	—	D ⁺	—	3
4	—	Ground	—	4
G	—	Shielded	—	G

- Size: 22. 5X45
- USB2.0 to USB 2.0
- Material:ABS
- Colour:White or Black

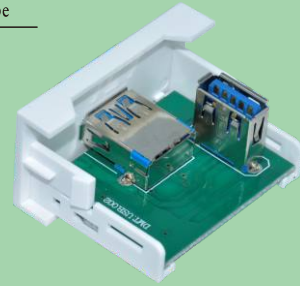


XJY-DMT-USB2.0-AF/AF-9

PIN OUT
USB3.0A Type USB3.0A Type

1	—	USB ₁	—	1
2	—	DM ⁻	—	2
3	—	DP ⁺	—	3
4	—	Ground	—	4
5	—	SSRXM ⁻	—	8
6	—	SSRXP ⁺	—	9
7	—	SGND	—	7
8	—	SSTXM ⁻	—	5
9	—	SSTXP ⁺	—	6
G	—	shielded	—	G

- Size: 22. 5X45
- USB3.0 to USB 3.0
- Material:ABS
- Colour:White or Black

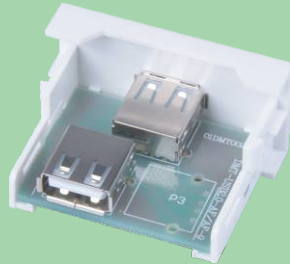


XJY-DMT-USB3.0-AF/AF-9

PIN OUT
USB2.0A Type USB2.0A Type

1	—	V _{BUS}	—	1
2	—	D ⁻	—	2
3	—	D ⁺	—	3
4	—	Ground	—	4
G	—	Shielded	—	G

- Size: 22. 5X45
- USB2.0 to USB 2.0
- Material:ABS
- Colour:White or Black



XJY-DMT-USB2.0-AF/AF-18

PIN OUT
USB3.0A Type USB3.0A Type

1	—	USB ₁	—	1
2	—	DM ⁻	—	2
3	—	DP ⁺	—	3
4	—	Ground	—	4
5	—	SSRXM ⁻	—	8
6	—	SSRXP ⁺	—	9
7	—	SGND	—	7
8	—	SSTXM ⁻	—	5
9	—	SSTXP ⁺	—	6
G	—	shielded	—	G

- Size: 22. 5X45
- USB3.0 to USB 3.0
- Material:ABS
- Colour:White or Black



XJY-DMT-USB3.0-AF/AF-18

PIN OUT
USB2.0A Type USB2.0A Type

1	—	V _{BUS}	—	1
2	—	D ⁻	—	2
3	—	D ⁺	—	3
4	—	Ground	—	4
G	—	Shielded	—	G

- Size: 22. 5X45
- USB2.0 to USB 2.0
- Material:ABS
- Colour:White or Black

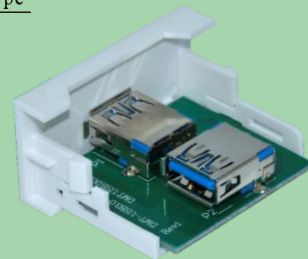


XJY-DMT-USB2.0-AF/AF-9L

PIN OUT
USB3.0A Type USB3.0A Type

1	—	USB ₁	—	1
2	—	DM ⁻	—	2
3	—	DP ⁺	—	3
4	—	Ground	—	4
5	—	SSRXM ⁻	—	8
6	—	SSRXP ⁺	—	9
7	—	SGND	—	7
8	—	SSTXM ⁻	—	5
9	—	SSTXP ⁺	—	6
G	—	shielded	—	G

- Size: 22. 5X45
- USB3.0 to USB 3.0
- Material:ABS
- Colour:White or Black

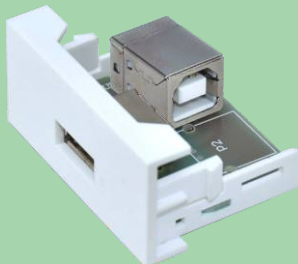


XJY-DMT-USB3.0-AF/AF-9L

PIN OUT
USB2.0A Type USB B

1	—	V _{BUS}	—	1
2	—	D ⁻	—	2
3	—	D ⁺	—	3
4	—	Ground	—	4
G	—	Shielded	—	G

- Size: 22. 5*45
- USB to USB
- Material: ABS
- Colour: White or Black

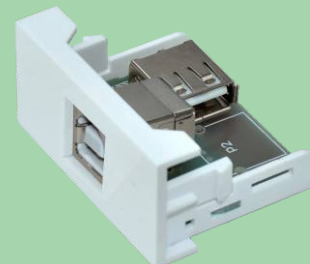


XJY-DMT-USB2.0-AF/BF-9L

PIN OUT
USB B USB2.0A Type

1	—	V _{BUS}	—	1
2	—	D ⁻	—	2
3	—	D ⁺	—	3
4	—	Ground	—	4
G	—	Shielded	—	G

- Size: 22. 5*45
- USB to USB
- Material: ABS
- Colour: White or Black

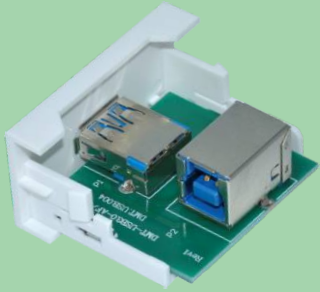


XJY-DMT-USB2.0-BF/AF-9L

PIN OUT

USB3.0A Type	USB B 3.0A Type	
1	USB	1
2	DM	2
3	DP	3
4	Ground	4
5	SSRM	8
6	SSRP	9
7	SGND	7
8	SSTXM	5
9	SSTXP	6
G	shielded	G

- Size : 22. 5*45
- USB to USB
- Material : ABS
- Colour : White or Black

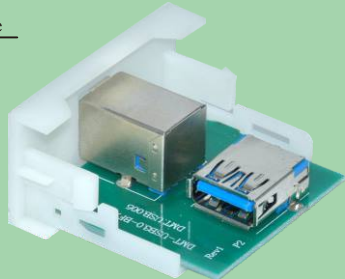


XJY-DMT-USB3.0-AF/BF-9L

PIN OUT

USB B 3.0A Type	USB3.0A Type	
1	USB	1
2	DM	2
3	DP	3
4	Ground	4
5	SSRM	5
6	SSRP	6
7	SGND	7
8	SSTXM	8
9	SSTXP	9
G	shielded	G

- Size : 22. 5*45
- USB to USB
- Material : ABS
- Colour : White or Black



XJY-DMT-USB3.0-BF/AF-9L

Universal Serial Bus

Pin Out:

- 1 - V_{BUS}
- 2 - D-
- 3 - D+
- 4 - Ground
- G - Shielded



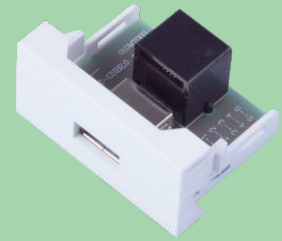
- Size: 22. 5*45
- Material: ABS
- Colour: White or Black

Screw to USB

XJY-DMT-USB2.0 A

PIN OUT USB2.0A Type RJ-45 Jack

- | | | |
|---|--------------------|-----|
| 1 | — V _{BUS} | — 1 |
| 2 | — D- | — 2 |
| 3 | — D+ | — 3 |
| 4 | — Ground | — 4 |
| G | — Shielded | — 5 |



- Size: 22. 5*45
- Material: ABS
- Colour: White or Black

RJ45 to USB

XJY-DMT-USB2.0 A-RJ45

USB 3.0 A

Pin Out:

- | | |
|----------------------|------------|
| 1 - V _{BUS} | 6 - RX+ |
| 2 - D- | 7 - SGND |
| 3 - D+ | 8 - TX- |
| 4 - Ground | 9 - TX+ |
| 5 - RX- | S - SHIELD |



- Size: 22. 5*45
- Material: ABS
- Colour: White or Black

Screw to USB 3.0

XJY-DMT-USB3.0 A

PIN OUT

HDMI Type A Pin Out

- | | | |
|---|--------------------|-----|
| 1 | — V _{BUS} | — 1 |
| 2 | — D- | — 2 |
| 3 | — D+ | — 3 |
| 4 | — Ground | — 4 |
| G | — Shielded | — G |



22. 5×45

XJY-DMT-HDMI-F/F-9

- | | |
|-----|-------------------------------|
| G-1 | 1 - TMDS Data 2+ |
| | 2 - TMDS Data 2 shield |
| | 3 - TMDS Data 2- |
| G-2 | 4 - TMDS Data 1+ |
| | 5 - TMDS Data 1 shield |
| | 6 - TMDS Data 1- |
| G-3 | 7 - TMDS Data 0+ |
| | 8 - TMDS Data 0 shield |
| | 9 - TMDS Data 0- |
| G-4 | 10 - TMDS Clock+ |
| | 11 - TMDS Clock shield |
| | 12 - TMDS Clock- |
| | 13 - CEC |
| | 14 - Reserved(N.C. on device) |
| | 15 - SCL(DDC clock line) |
| | 16 - SDA(DDC date lines) |
| | 17 - DDC/CEC Ground |
| | 18 - +5V Power |
| | 19 - Hot plug detect |
| | GND - Ground |

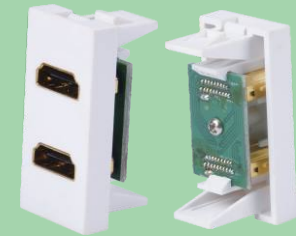
HDMI Type A Pin Out



22. 5×45

XJY-DMT-HDMI-F/F-18

- | | | | |
|----|------|-------|---------|
| 1 | — 1 | 11 | — 11 |
| 2 | — 2 | 12 | — 12 |
| 3 | — 3 | 13 | — 13 |
| 4 | — 4 | 14 | — 14 |
| 5 | — 5 | 15 | — 15 |
| 6 | — 6 | 16 | — 16 |
| 7 | — 7 | 17 | — 17 |
| 8 | — 8 | 18 | — 18 |
| 9 | — 9 | 19 | — 19 |
| 10 | — 10 | SHELL | — SHELL |

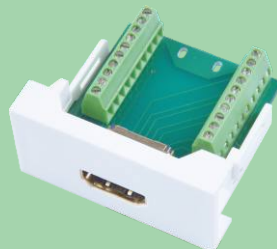


22. 5×45

XJY-HDMI-38

HDMI Type A Pin Out

- | | |
|-----|-------------------------------|
| G-1 | 1 - TMDS Data 2+ |
| | 2 - TMDS Data 2 shield |
| | 3 - TMDS Data 2- |
| G-2 | 4 - TMDS Data 1+ |
| | 5 - TMDS Data 1 shield |
| | 6 - TMDS Data 1- |
| G-3 | 7 - TMDS Data 0+ |
| | 8 - TMDS Data 0 shield |
| | 9 - TMDS Data 0- |
| G-4 | 10 - TMDS Clock+ |
| | 11 - TMDS Clock shield |
| | 12 - TMDS Clock- |
| | 13 - CEC |
| | 14 - Reserved(N.C. on device) |
| | 15 - SCL(DDC clock line) |
| | 16 - SDA(DDC date lines) |
| | 17 - DDC/CEC Ground |
| | 18 - +5V Power |
| | 19 - Hot plug detect |
| | GND - Ground |

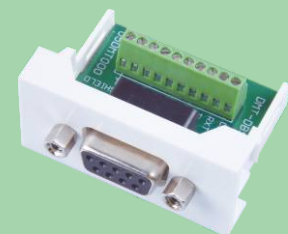


22. 5×45

XJY-DMT-HDMI

DB9 D-SUB

- | | |
|---------|------------|
| 1 - CD | 6 - DSR |
| 2 - RXD | 7 - RTS |
| 3 - TXD | 8 - CTS |
| 4 - TRD | 9 - RI |
| 5 - GND | S - SHIELD |

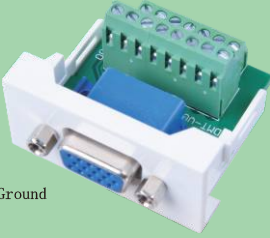


22. 5×45

XJY-DMT-DB9

VGA D-SUB

1 - Red Video	11 - ID0
2 - Green Video	12 - ID1
3 - Blue Video	13 - HSYNC
4 - ID2	14 - VSYNC
5 - self-test	15 - ID3
9 - Reserved	6, 7, 8, 10 - Ground




XJY-DMT-VGA-12

22.5×45

SVGA D-SUB

1 - Red Video	9 - Reserved
2 - Green Video	10 - DGND
3 - Blue Video	11 - ID0
4 - ID2	12 - ID1
5 - self-test	13 - HSYNC
6 - Red GND	14 - VSYNC
7 - Green GND	15 - ID3
8 - Blue GND	6 - Ground




XJY-DMT-SVGA

22.5×45

MINI-JACK 3.5mm

STEREO



Pin Out:


1 - L
2 - GND
3 - R

22.5×45

XJY-DMT-PHJ

VGA D-SUB

1 - Red Video	11 - ID0
2 - Green Video	12 - ID1
3 - Blue Video	13 - HSYNC
4 - ID2	14 - VSYNC
5 - self-test	15 - ID3
9 - Reserved	6, 7, 8, 10 - Ground



45×45

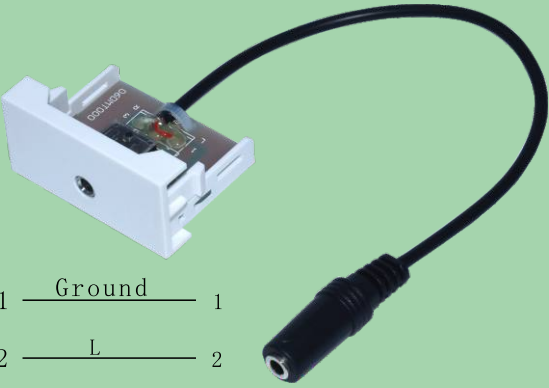
MINI-JACK 3.5mm

STEREO

Pin Out:


1 - L
2 - GND
3 - R

XJY-DMT-VGA-12 + DMT-PHJ



1 - Ground	1
2 - L	2
3 - R	3

XJY-DMT-PHJ-F/F-25CM



1 - Ground	1
2 - L	2
3 - R	3

XJY-DMT-PHJ-F/F



90°

90° Male

XJY-HDMI-01



180°

180° Male

XJY-HDMI-02



·Material: ABS

·Colour: White or Black

180° Male to Female

XJY-HDMI-30



Length:15cm(optional)

XJY-HDMI-37



Length:15cm(optional)

XJY-HDMI-40



Single Port

- Faceplate with HDMI-01/02
- Size:45*45
- Material: ABS
- Colour: White or Black

XJY-HDMI-04-01 90°

XJY-HDMI-04-02 180°

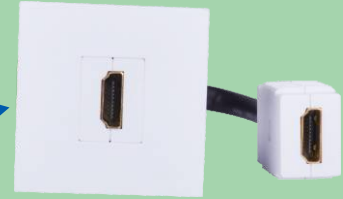


45x45

XJY-8081035



XJY-HDMI-37



XJY-HDMI-04-37



22.5X45

XJY-8081100 + HDMI-40



45X45

XJY-8081210 + HDMI-40



- USB2.0A/USB2.0A
- 180°
- Material:ABS/PC
- Size:45x45
- Colour:White or Black

XJY-8081210 + USB-08



- USB3.0A/USB3.0A
- 180°
- Material:ABS/PC
- Size:45x45
- Colour:White or Black

XJY-8081210 + USB-08D



- HDMI Female-female Adaptor
- 180°
- Material:ABS
- Size:45x45
- Colour:White or Black

XJY-8081210 + HDMI-20



- CAT5E
- TIA/EIA:568A/B coded
- 110IDC
- Unshielded
- Material:ABS
- Size:45x45
- Colour:White or Black
- With binding wire hole

XJY-8081210 + NE-108



- CAT6
- TIA/EIA:568A/B coded
- 110IDC
- Unshielded
- Material:ABS
- Size:45x45
- Colour:White or Black
- With binding wire hole

XJY-8081210 + NE-108



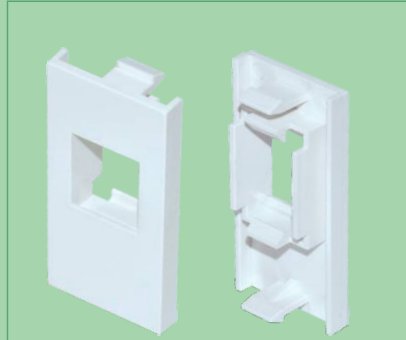
- Optional Modules: Keystone/HDMI/USB
- Size: 25*50
- Material: ABS
- Colour: White or Black

XJY-NE-89 Single Port



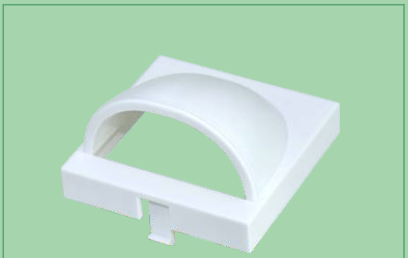
- Optional Modules: Keystone/HDMI/USB
- Size: 25*50
- Material: ABS
- Colour: White or Black

XJY-NE-41 Single Port



- Optional Modules: Keystone/HDMI/USB
- Size: 25*50
- Material: ABS
- Colour: White or Black

XJY-6116000 Single Port



Cable outlet mask

- Size: 50*50
- Material: ABS
- Colour: White or Black

XJY-8081107



Single Port

- Faceplate with HDMI-01/02
- Size: 50*50
- Material: ABS
- Colour: White or Black

XJY-HDMI-07-01 90°

XJY-HDMI-07-02 180°



Dual Ports

- Faceplate with HDMI-01/02
- Size: 50*50
- Material: ABS
- Colour: White or Black

XJY-HDMI-36-01 90°

XJY-HDMI-36-02 180°

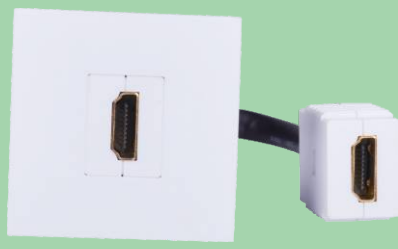


50x50

XJY-8081036



XJY-HDMI-37



XJY-HDMI-07-37



Single Port

XJY-RCA-22-01	90°
XJY-RCA-22-02	180°

- A:F81 Gold Plating
- B:F81 Nickel Plating
- Faceplate with F81 and HDMI-01/02
- F81 length: 20.5 mm
- Size:50*50
- Material: ABS
- Colour: White or Black



Dual Ports

XJY-RCA-21-01	90°
XJY-RCA-21-02	180°

- A:F81 Gold Plating
- B:F81 Nickel Plating
- Faceplate with F81 and HDMI-01/02
- F81 length: 20.5 mm
- Size:50*50
- Material: ABS
- Colour: White or Black



Three Ports

XJY-RCA-23-01	90°
XJY-RCA-23-02	180°

- A:F81 Gold Plating
- B:F81 Nickel Plating
- Faceplate with F81 and HDMI-01/02
- F81 length: 20.5 mm
- Size:50*50
- Material: ABS
- Colour: White or Black



Single Port

XJY-RCA-20-01	90°
XJY-RCA-20-02	180°

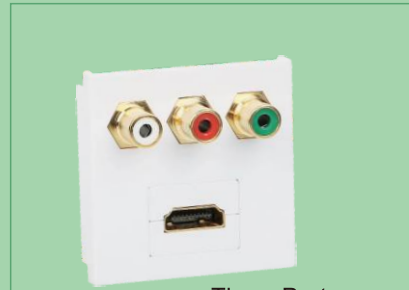
- A:RCA Gold Plating
- B:RCA Nickel Plating
- Faceplate with RCA and HDMI-01/02
- Size:50*50
- Material: ABS
- Colour: White or Black



Dual Ports

XJY-RCA-19-01	90°
XJY-RCA-19-02	180°

- A:RCA Gold Plating
- B:RCA Nickel Plating
- Faceplate with RCA and HDMI-01/02
- Size:50*50
- Material: ABS
- Colour: White or Black



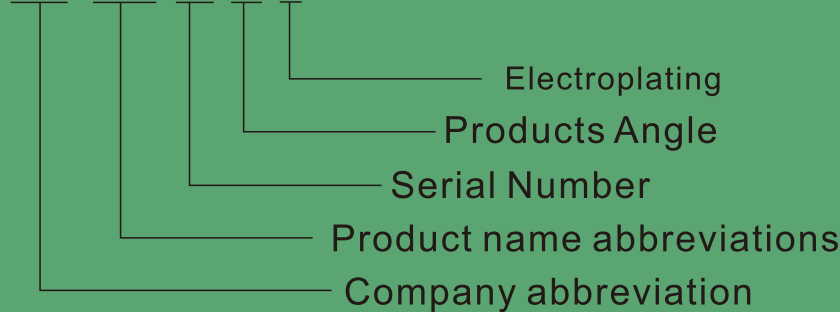
Three Ports

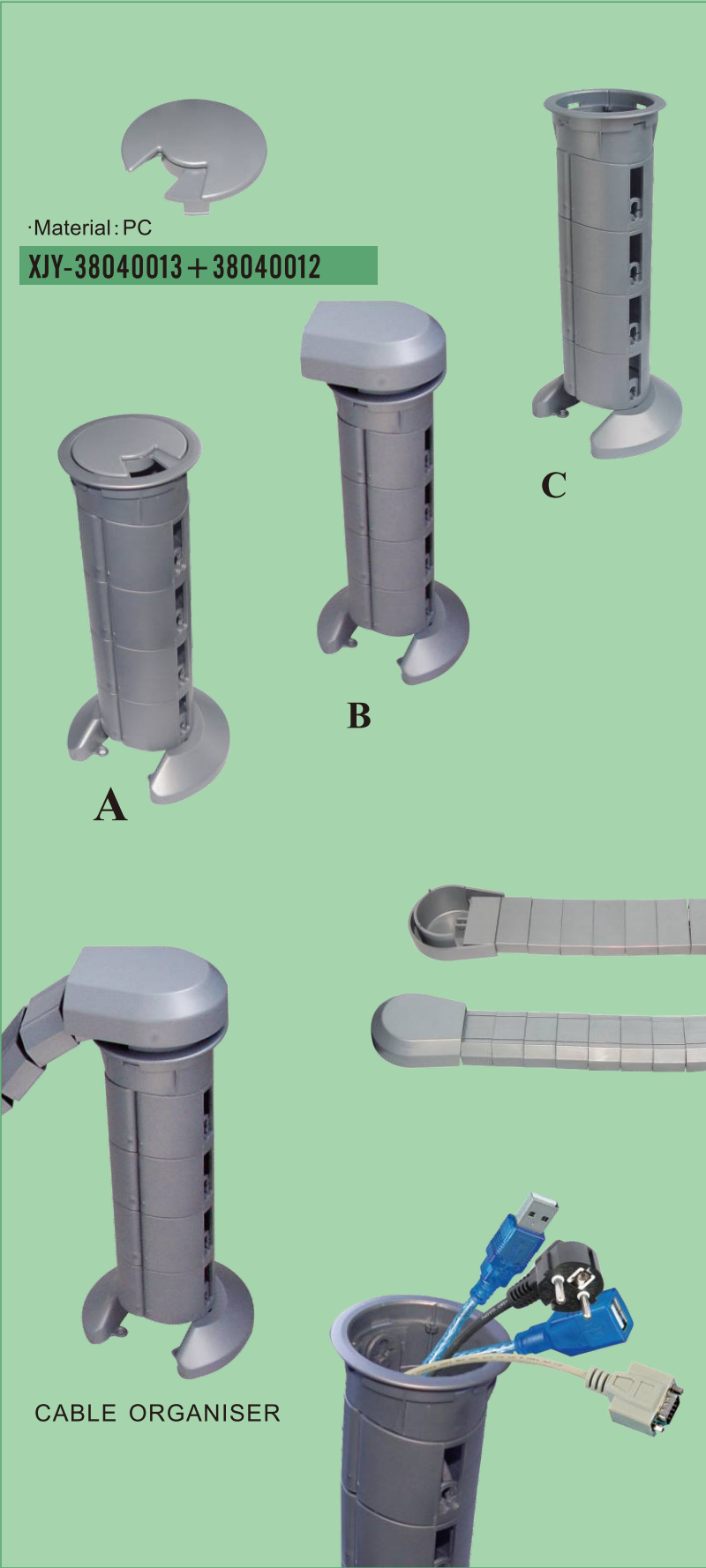
XJY-RCA-18-01	90°
XJY-RCA-18-02	180°

- A:RCA Gold Plating
- B:RCA Nickel Plating
- Faceplate with RCA and HDMI-01/02
- Size:50*50
- Material: ABS
- Colour: White or Black

Product coding rules

XJY-RCA-22-01/A







·Material: PC
XJY-38087003



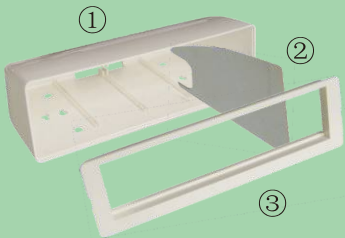
·Material: ABS
XJY-38080160



·Material: ABS
XJY-38080161



CABLE ORGANISER
XJY-38087003 + 38080161



·Material: ABS
① **XJY-38075272**
② **XJY-38081143**
③ **XJY-38081105**



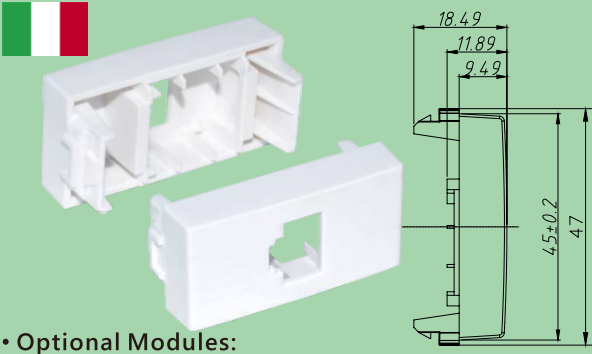
·Material: ABS
XJY-NE-197



CABLE ORGANISER
XJY-NE-197 + 4x8081106 + 8087003



·Material: ABS
XJY-NE-197 + 4NE-34



- Optional Modules: keystone/HDMI/USB
- Size: 22.5x45mm
- Material: ABS
- Colour: White / Black

XJY-8081215 Single Port



- Size: 22.5x45mm
- Material: ABS
- F81 length: 20.5 mm
- Colour: White or Black

XJY-8081216