

Synergy® traditional switches and dimmers



7330 00



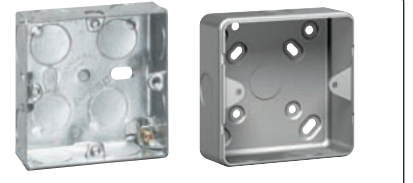
7332 02



7330 46



7332 47



Flush and surface mounting back boxes p. 187



7330 06



7332 07



7330 09



7332 09

Brushed stainless steel front plates : brushed stainless steel with clear epoxy satin lacquer coating
 Polished stainless steel front plates : electroplated stainless steel plate with trivalent chrome for mirror finish
 White interiors and rockers
 Terminal screws captive and backed off ready for cabling

Pack	Cat. Nos.		Stainless steel Brushed Polished	Single pole plate switches 10 AX - 250 V~
1	7330 00	7332 00		1 gang - 1 way
1	7330 01	7332 01		1 gang - 2 way
1	7330 05	7332 05		1 gang - intermediate
1	7330 02	7332 02		2 gang - 2 way
1	7330 03	7332 03		3 gang - 2 way
1	7330 04	7332 04		4 gang - 2 way
1	7330 06	7332 06		6 gang - 2 way

Pack	Cat. Nos.		Stainless steel Brushed Polished	Single pole plate switches 20 AX - 250 V~
1	7331 31	7333 31		1 gang - 2 way
1	7331 32	7333 32		2 gang - 2 way
1	7331 33	7333 33		3 gang - 2 way

Pack	Cat. Nos.		Stainless steel Brushed Polished	Single pole push switches 10 A - 250 V~
1	7330 07	7332 07		1 gang - 2 way push switch

Pack	Cat. Nos.		Stainless steel Brushed Polished	Dimmer units - 230 V~
1	7330 46	7332 46		1 gang - 2 way 50 Hz 40 W-250 W push on/off rotary
1	7330 47	7332 47		2 gang - 2 way 50 Hz 40 W-250 W push on/off rotary

Pack	Cat. Nos.		Stainless steel Brushed Polished	Dimmer units - 230 V~ - electronic type
1	7331 56	7333 56		1 gang - 2 way 50-60 Hz 40 W-400 W push on/off rotary
1	7331 57	7333 57		2 gang - 2 way 50-60 Hz 40 W-400 W push on/off rotary

Pack	Cat. Nos.		Stainless steel Brushed Polished	3 pole fan switches 10 A - 250 V~
1	7330 09	7332 09		3 pole fan switch